

Select.live Device

Quick Installation Guide



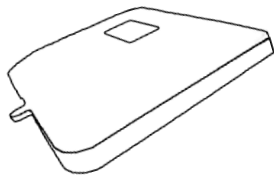
Installation of Select.live device with SP PRO Series I and II

Introduction

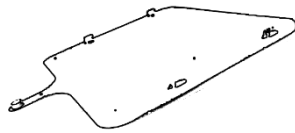
This instruction will show how to install the Select.live device (Order code 005283) for SP PRO series II and SP PRO Series I using Select.live Adaptor Kit for SP PRO Series I (Order code 005290).

Contents of Packing

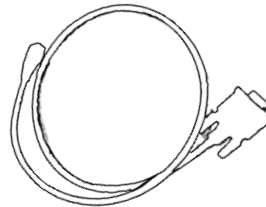
Select.live Device (Order code: 005283)



A



B



C



D



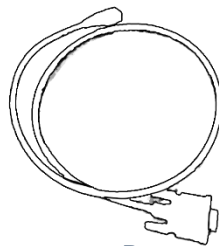
E

Position	Quantity	Description
A	1	Select.live Device
B	1	Wall Mount Plate
C	1	Communication Cable
D	4	Wall Mount Screws
E	2	Double Side Mounting Strip

Select.live Adaptor kit for SP PRO Series I (Order code: 005290)



A



B

Position	Quantity	Description
A	1	12V DC power adaptor
B	1	Powered Console cable

Select.live Device

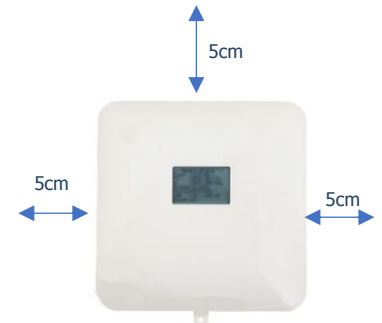
Quick Installation Guide



Installation of Select.live device

1. Mount your select.live device on the wall as following requirements
 - a. The mounting location must be indoors as it has IP rating of IP53
 - b. The gap between your select.live device and SP PRO inverter should be maintained as per SP PRO installation guide

The ambient conditions at the mounting location must be suitable for the suitable for the operation of the select.live device (see



Select.live Device

Quick Installation Guide



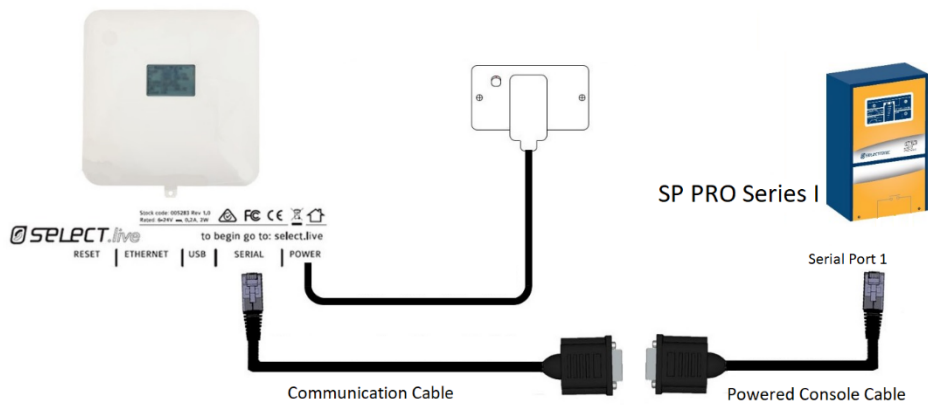
- c. Specification section)
- d. The maximum length of communication cable should be not more than 5m
- e. Mounting gaps and orientation should be as shown in figure
- f. The mounting location must have you Wi-Fi network if you are going to use wireless connection for internet.

5cm

2. Connect your select.live device and SP PRO inverter using communication cable as show below to power this device and communication with SP PRO.



For SP PRO Series I inverter, use 12V DC adaptor and Powered Console cable from the Select.live Adaptor kit for SP PRO Series I as shown below



Select.live Device

Quick Installation Guide

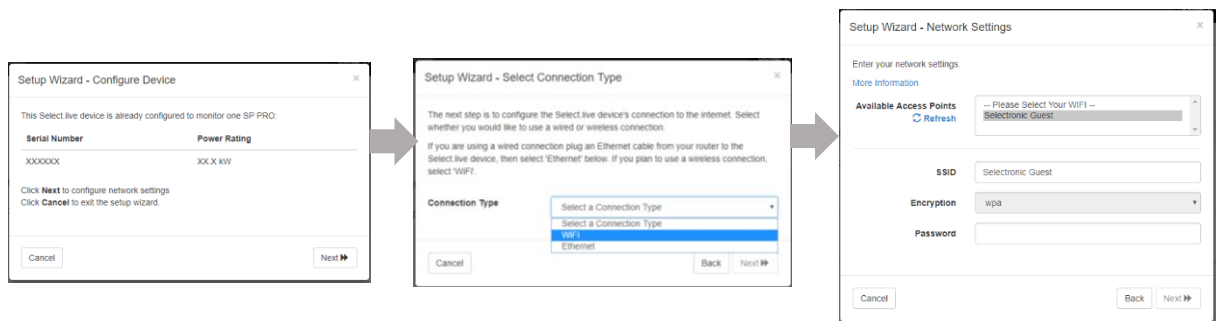


Select.live device setup for internet connection

3. Turn on your SP PRO inverter. After a minute, you should see the following message on the screen of your select.live device

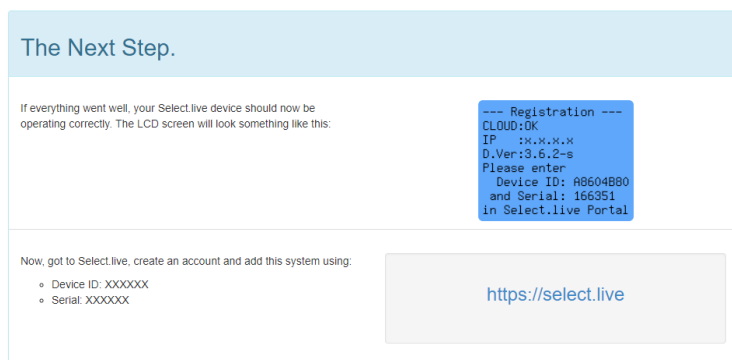
```
----- SETUP -----  
Connect to Wi-Fi  
SSID: selectronic  
  
Browse to:  
http://192.168.1.1  
to setup
```

4. From the computer or mobile device, connect to the select.live device using Wi-Fi SSID: selectronic with no pass key. Open a web browser and enter <http://192.168.1.1>. Then, press Enter and you will be directed to the Select.live device setup web interface.
5. Click "Wizard Setup" button to run wizard for auto detection of SP Pro inverter. Select your preferred network Wi-Fi or Ethernet connection. If Wi-Fi network, provide your Wi-Fi internet SSID and password for internet connection to the select.live device.



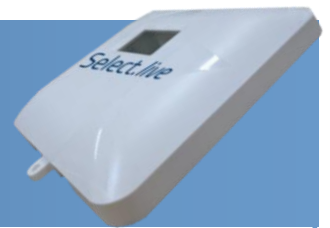
6. Finish the wizard setup and Ethernet cable if you have chosen Ethernet on network connection during wizard setup. After about 30 seconds, you should see following screen on your select.live device. Your select.live device is ready to register to Select.live portal using device id and serial.

Setup Complete ✓



```
--- REGISTRATION ---  
Cloud:OK  
IP :XXX.XXX.XXX.XXX  
D.Ver:XX.XX.XX  
Please Enter:  
Device ID: XXXXXXXX  
Serial: XXXXXX  
in Select.live portal
```

Select.live Device Quick Installation Guide



Select.live Portal Registration

7. On internet connected computer or mobile device, browse to <http://select.live> Select.live Portal. Click on "Not register yet?" and complete the form to register an account. Follow the instruction from the email that was send to you; to activate account.

SELETRONIC

Full Name
Email
Password
Repeat Password
Mobile Number
Number and Street
Street line 2
City or Suburb
Select State
Postcode

Sign Up

Registered but not activated?
Already Registered?

8. Login to your account and register your select.live device by clicking "Add a system" and providing Device ID and Serial that are displayed on screen of your select.live device.

Add a new System to your profile ✕

Connect your Select.Live Device to your SP PRO and set it up so that it is connected to the Internet.

Please find the Device ID and Serial number on the LCD screen of your Select.Live Device as shown in the example, and copy those details into the form below.

```
-- Registration --  
Cloud:OK  
IP :XXX.XXX.XXX.XXX  
D.Ver:XX.XX.XXX  
Please Enter:  
Device ID: XXXXXXXX  
and Serial: XXXXXX  
in Select.Live Portal
```

Device ID

Serial

Add System

9. You have successfully completed the basic setup for select.live device. Now you should be able to see your SP PRO system in select.live portal system page.



Specification

Physical	
Dimensions	150mm x 150mm
Weight	315g
LCD display	128px x 64px
Housing material	UV stabilized PC+ABS
IP rating	IP53
Operating temperature	10 to 70°C
Operating humidity	5 to 95% humidity
Technical	
Wireless	802.11b/g/n Wi-Fi 2.4GHz
Wireless range	Up to 400 m
Wired connectivity	Serial RS232, 10/100 Ethernet
Wired Length	Up to 5m for Serial RS232
Operating system	Embedded Linux
Power Supply	
Power Method	DC adaptor or Communication cable (Power over serial)
Rating	6V to 24V, 1A Max



Troubleshooting

Setup problem

1. I couldn't find the "selectronic" Wi-Fi SSID?

Cause

- Your Select.live device is not power up
- Wi-Fi of your select.live device is connection of the network
- Wi-Fi SSID and password that you entered in Wizard setup are wrong

Solution

- Make sure your SP PRO is turned on
- Check your select.live device power connection and check screen text for powered up
- Factory reset your select.live device to reset Wi-Fi connection and use wizard setup to connect to the internet.

2. How Do I factory reset the select.live device

- Press and hold the select.live device's rest button for 10 seconds and release it, then device will reboot after about a minute.

3. My select.live device couldn't auto detect SP PRO inverter

Cause

- The Connection between SP PRO and select.live device is not proper
- Your SP PRO login password is different than default password "Selectronic SP PRO"

Solution

- Check your connection between SP PRO and select.live device
- Enter the SP PRO login password during the wizard setup and click AutoDetect to check.

4. Select.live portal Couldn't connect to my select.live device

Cause

- Your select.live device is not setup
- Your select.live device doesn't have internet connection

Solution

- Run Wizard setup from select.live device web interface
- Check your select.live device screen. If it shows "Cloud: OK" means it has internet connection else no internet connection. Run Wizard setup from select.live device web interface to connect internet properly

5. I couldn't find Device ID and Serial number.

After about 30 seconds of wizard setup, device ID and serial number are shown in screen of select.live device. Alternately, these are shown on home page of select.live device web interface.